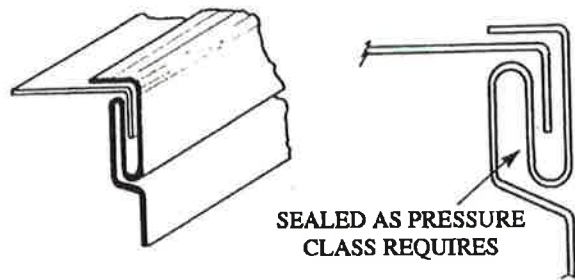


**NOTES:**

- 1) Ref: SMACNA-HVAC Duct Construction Standards-Metal and Flexible, Third Edition 2005, page 2.113, figure 2-9.

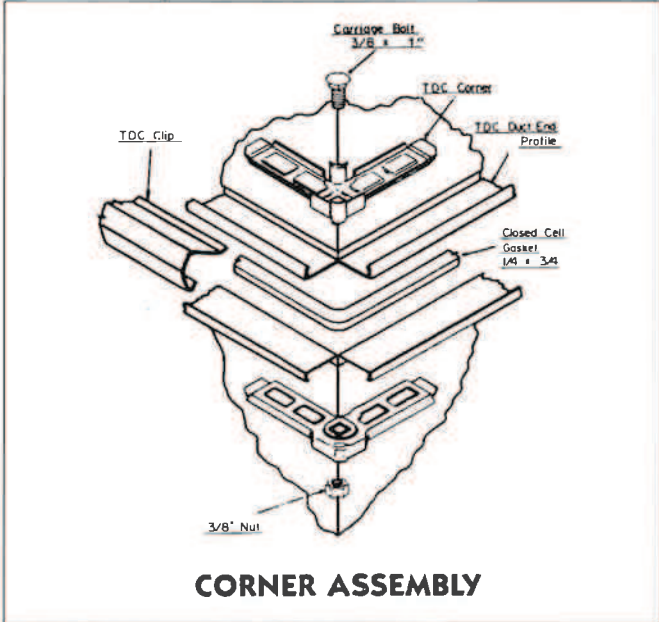


**PITTSBURGH LOCK**

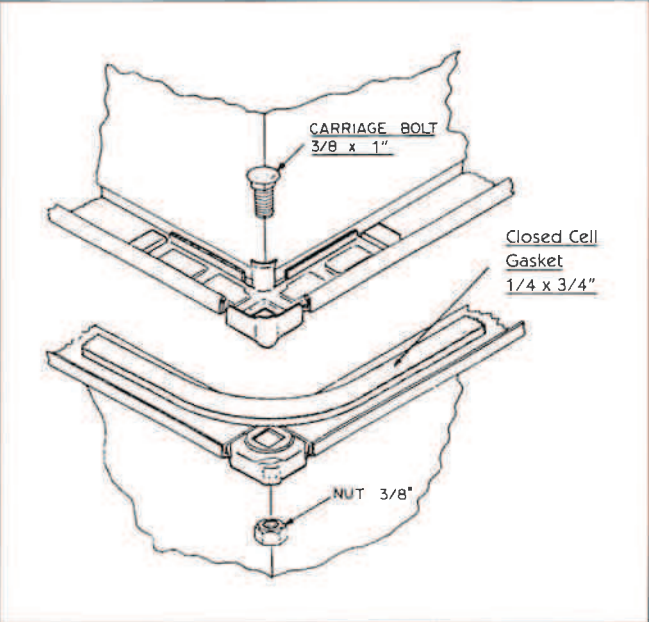
**NOTES:**

- 1) Ref: SMACNA-HVAC Duct Construction Standards-Metal and Flexible, Third Edition 2005, page 21.0, figure 2-2.





**CORNER ASSEMBLY**

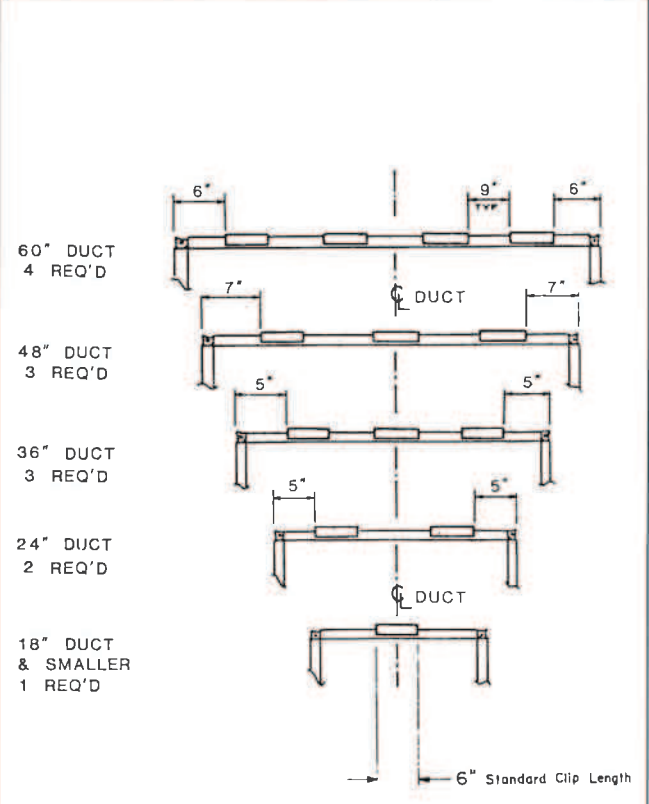


The clamping T.D.C. Clips are installed with 6" wide full coverage T.D.C. Clip tool as shown. For recommended Clip spacing, see Chart

When using T.D.C. in conjunction with slip-on four bolt Connectors, it may be desirable to increase tension on T.D.C. Clip.

To tighten the grip of the T.D.C. Clip to the flange by overbending the long leg of the Clip, use the forming end of the tool as shown at left.

**CAUTION:** Use of a hammer for installation will damage Clip and may cause leakage.

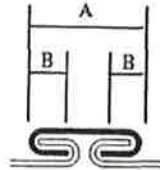


**RECOMMENDED CLIP SPACE**



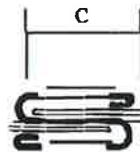
# TRANSVERSE CONNECTORS

Sheet Metal Fabricators



A - 1-1/2"  
B - 7/16"

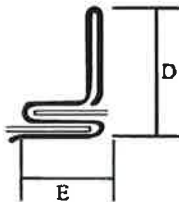
## T-1 FLAT DRIVE



C - 1-1/2"

3/16" HEM  
INSIDE TYPICAL

## T-6 FLAT SLIP

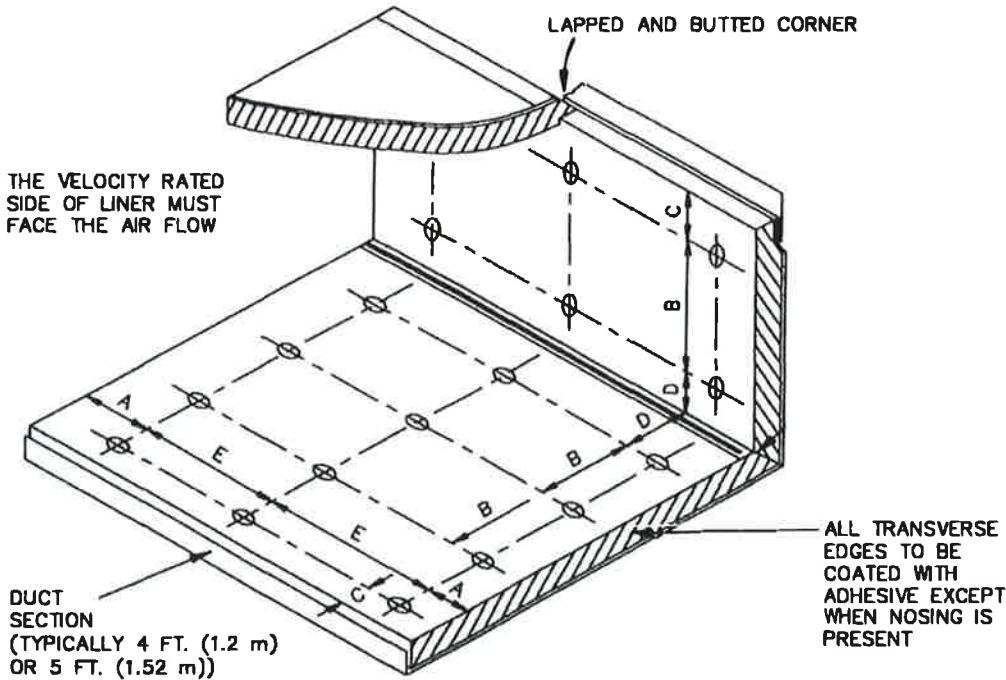


D - 1-1/4"  
E - 1-9/16"

## T-11 STANDING SLIP

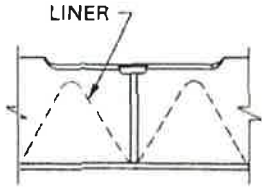
### NOTES:

- 1) Ref: SMACNA-HVAC Duct Construction Standards-Metal and Flexible, Third Edition 2005, page 2.112, figure 2-8.
- 2) See Duct Construction Tables for limits of application.



LINEAR FASTENING SCHEDULE					
VELOCITY	DIMENSIONS				
	A	B	C	D	E
0 - 2500 FPM	3"	12"	4"	6"	18"
2501 - 6000 FPM	3"	6"	4"	6"	16"

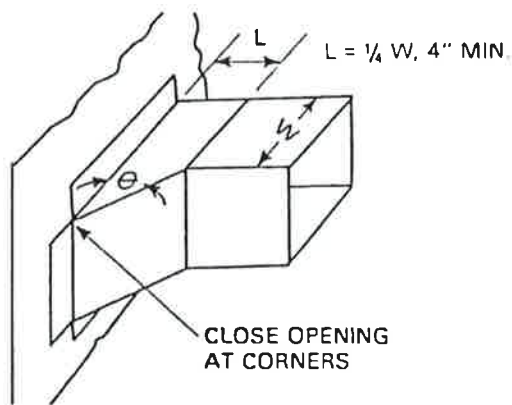
FASTENERS:



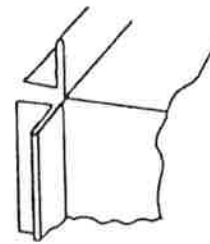
WELDED PIN  
INTEGRAL HEAD

**NOTES:**

1) Ref: SMACNA-HVAC Duct Construction Standards-Metal and Flexible, Third Edition 2005, pages 7.13 and 7.17, figure 7-11 and 7-12.



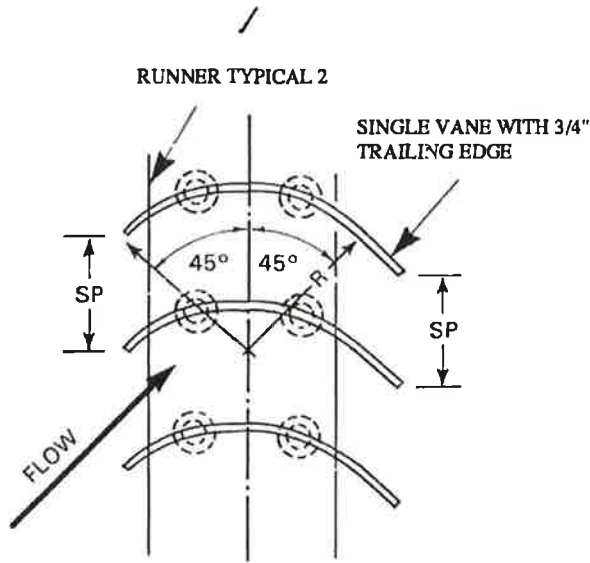
**45 DEGREE ENTRY**



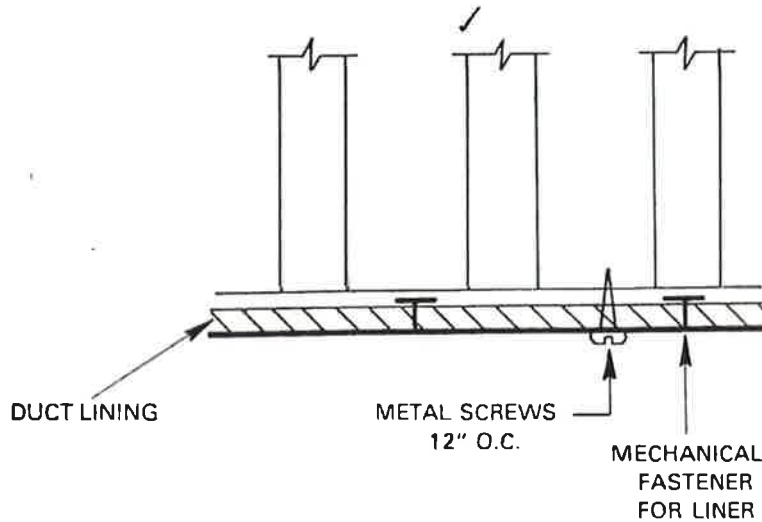
**CLINCH LOCK**

**NOTES:**

- 1) Ref: SMACNA-HVAC Duct Construction Standards-Metal and Flexible, Third Edition 2005, page 4.8, figure 4-6.
- 2) Extractors to be furnished and installed by erectors where specified



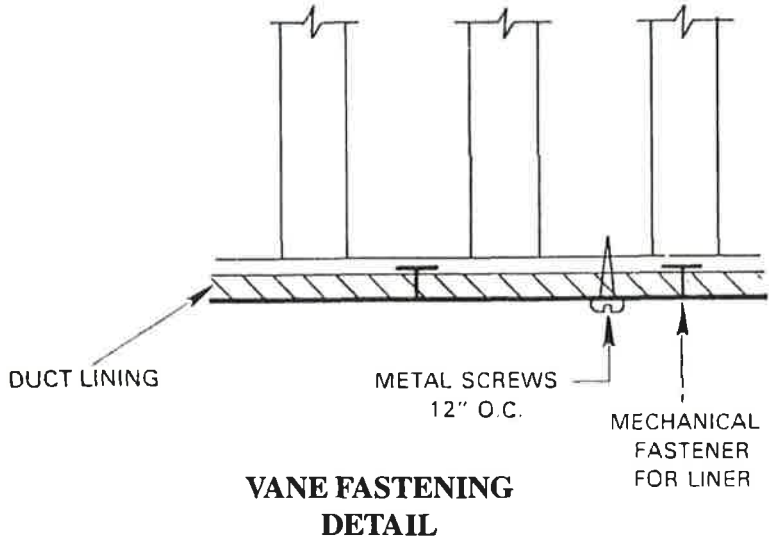
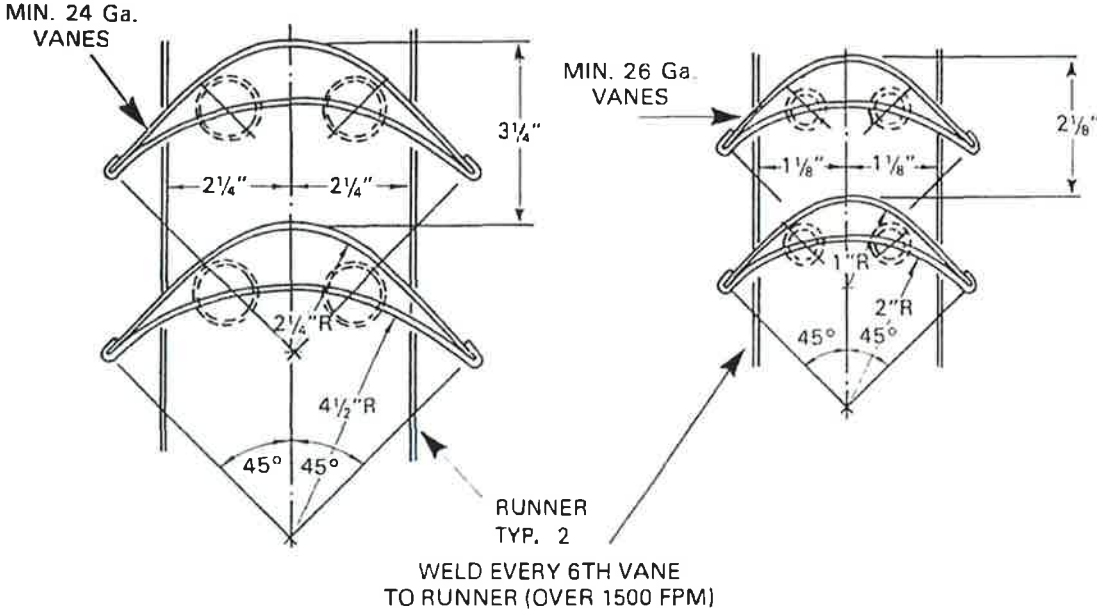
VANE SCHEDULE			
	R	SP.	GA
SMALL	2"	1-1/2"	24
LARGE	4-1/2"	3-1/4"	22



### VANE FASTENING DETAIL

**NOTES:**

- 1) Ref: SMACNA-HVAC Duct Construction Standards-Metal and Flexible, Third Edition 2005, pages 4.5 and 4.6, figures 4-3 and 4-4.
- 2) Maximum unsupported vane length is 36".



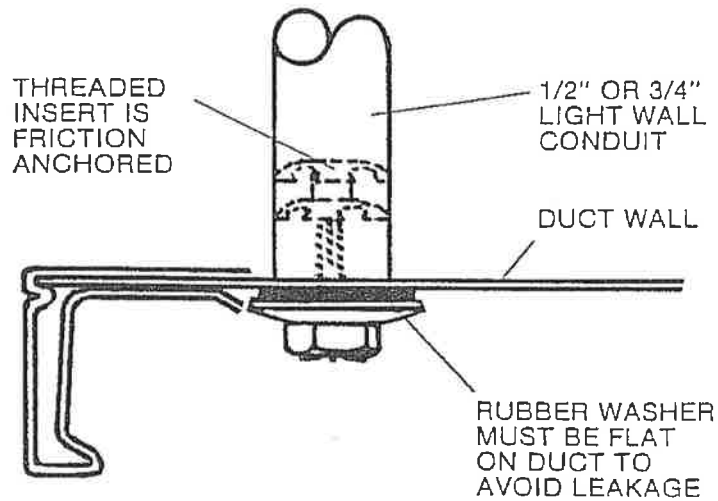
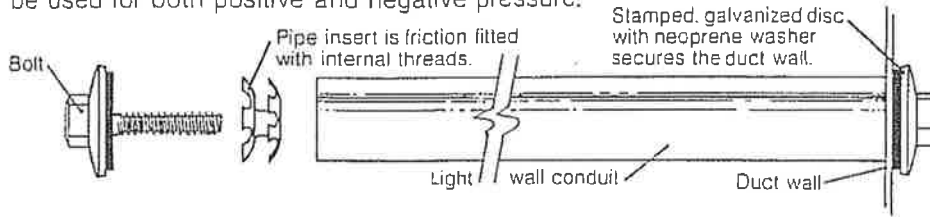
**NOTES:**

- 1) Ref: SMACNA-HVAC Duct Construction Standards-Metal and Flexible, Third Edition 2005, pages 4.5 and 4.6, figures 4-3 and 4-4.
- 2) Maximum unsupported small vane length is 48" and large vane length is 72".

HAMLIN SHEET METAL CO., INC.

**EASYROD TIE ROD CONSTRUCTION**  
Use For Shop Fabricated Or Knocked Down Ductwork

A simple, strong component system to make the installation of tie rods faster. Can be used for both positive and negative pressure.



See attached test results dated 8-6-93 for conformance to SMACNA standards and pressure class limitations