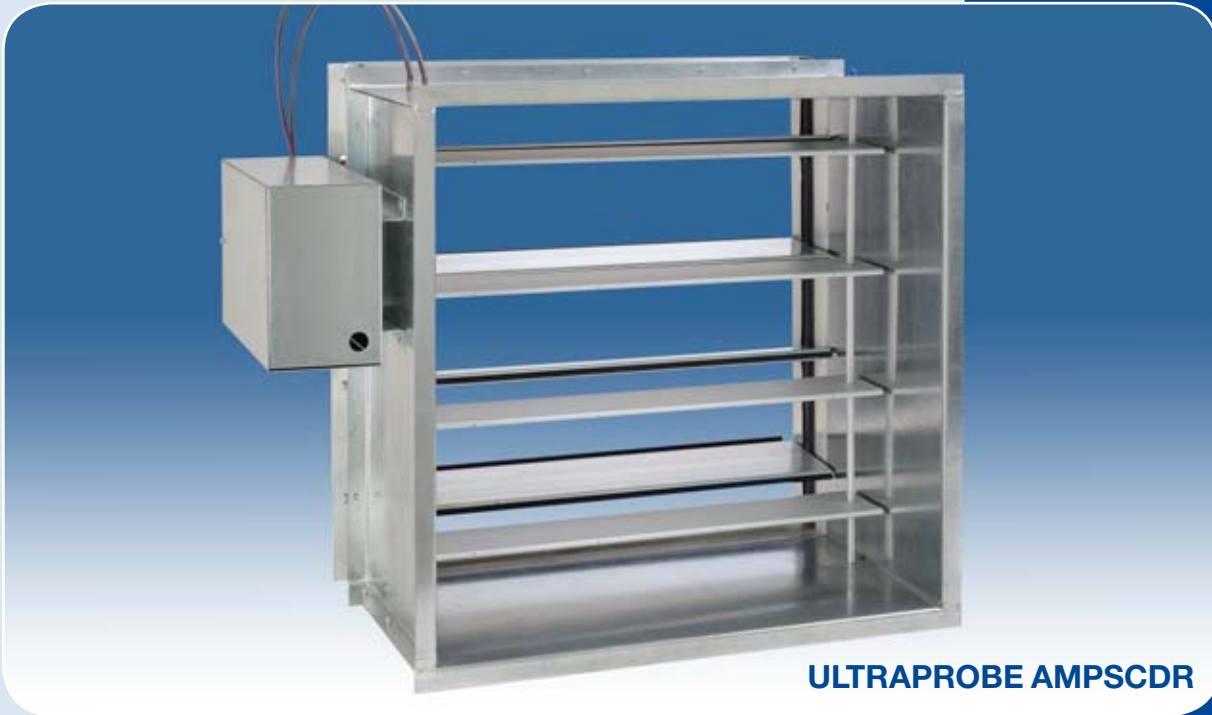


ULTRAPROBE AMPSCDR

Airflow Measuring Probe Station Rectangular Control Damper

Accurate,
Reliable,
Repeatable
Air Flow
Measurement

SPEC EP-0035-1



ULTRAPROBE AMPSCDR

ULTRAPROBE AMPSCD

- Complete air flow measurement and control built in to one easy to install unit
- Designed for equal – area averaging of flows, resulting in improved accuracy and reliability
- Constant volume control to +/- 2% of set point
- Design flow range from 400 fpm to 6000 fpm
- Available in round or rectangular configurations

Optional features:

- Factory installed transmitter, controller and actuator
- Stainless steel construction

Application:

- Engineered for in line duct installation or outside air inlets, laboratory or room supply/exhaust airflow control

Specifications For Standard Units

Accuracy: +/- 2%

Temperature: maximum operating 400°F

Minimum design flow: 400 fpm

Maximum design flow: 6000 fpm

Pitot/static sensors: aluminum with hard anodized finish

Process connections: 1/4-in. barb

UT ULTRATECH
INDUSTRIES, INC.

www.hamlincos.com

ULTRAPROBE AMPSCDR

Airflow Measuring Probe Station Rectangular Control Damper

Applications

ULTRATECH ULTRAPROBE Airflow Measuring Probe Station Rectangular Control Damper provides accurate, repeatable measurement and control of air movement through ducts and outside air inlets. Lightweight, rugged construction coupled with ease of installation and economical pricing make these devices particularly applicable to the HVAC trade. Durable, quality construction ensures long term, trouble-free operation. ULTRAPROBE Airflow Measuring Probe Station Rectangular Control Dampers with optional transmitter, controller and actuator.

Designed for inline duct installation or outside air inlets, laboratory or room supply/exhaust airflow control.

The optional transmitter/controller control signal to an optional actuator for accurate constant volume control.

Gas velocities often vary significantly across a duct. Because single-point flow measuring devices read the velocity at one point only, errors, in flow measurement are common. The ULTRAPROBE AMPSCDR has total and static pressure measuring points which are distributed for equal-area averaging of flows, resulting in improved accuracy and reliability.

Description

ULTRAPROBE Airflow Measuring Probe Station Rectangular Control Damper is designed per standard duct traverse requirements. These probes are designed to match the balancer's industry standard Pitot tube, including the method of static pressure measurement and distance between the total pressure and static pressure sensing holes.

ULTRAPROBE Airflow Measuring Probe Stations Rectangular Control Dampers use multiple averaging Pitots to determine total velocity and static pressure measurements. ULTRAPROBE's unique AMPSCDR construction eliminates non-essential hardware that can cause build-up of dirt and foreign matter on the measuring assembly.

ULTRAPROBE Airflow Measuring Probes are available for fan inlets, round, rectangular and oval duct configurations. All configurations feature a sensor assembly that allows for duct expansion and contraction.

Suggested Specifications

Airflow Measuring Probe Station Rectangular Control Dampers shall be of the multiple averaging Pitot/static sensor type, with sensors distributed for equal-area averaging of flows with damper, transmitter, controller and actuator. The AMPSCDR shall provide constant volume control with an accuracy of 2%. Internal Pitot/static sensors shall be constructed of aluminum with hard anodized finish. Instrument connections shall be 1/4" barb.

The airflow measuring probe control dampers shall be ULTRAPROBE AMPSCDR, as manufactured by ULTRATECH INDUSTRIES, INC., Garner, NC, U.S.A.

Accurate,
Reliable,
Repeatable
Air Flow
Measurement



Ultratech Industries certifies that the ULTRAPROBE AMP Airflow Measuring Probe Station shown herein is licensed to bear the AMCA Certified Ratings Seal-Airflow Measurement Station Performance. The ratings shown are based on tests and procedures performed in accordance with AMCA Publication 611 and comply with the requirements of the AMCA Certified Ratings Program.

Performance ratings include the effect of birdscreen plate.

ULTRAPROBE AMPSCDR Ordering Information

Series

- 3 - Rectangular with no flanges
- 9 - Rectangular with sheet metal flanges

Materials

- 1 - Standard - 16 gauge galvanized casing with aluminum probes
- 2 - Stainless Steel Casing aluminum probes
- 3 - Stainless Steel Casing and probes

Straightening Vane Design

- 1 - Standard - 3/8"
- 2 - Optional - 3/4"
- 3 - Excluded

Dimensions Length X Width

(Customer supplied)

Construction Specifiers

- B - Bolt holes (specify)
- C - Compression fittings for process connections
- T - Include transmitter, controller and actuator
- Z - Special (specify)

UT ULTRATECH
INDUSTRIES, INC.

www.hamlinco.com